



**AQUIND Limited**

---

# **AQUIND INTERCONNECTOR**

**Additional Viewpoint Location Plan and Additional  
Viewpoints Part A Figures 15.57 - 15.59**

The Planning Act 2008

Infrastructure Planning (Applications: Prescribed Forms and Procedure) Regulations 2009  
Regulation 8(1)(c)

Document Ref: 7.7.16

PINS Ref.: EN020022

**AQUIND Limited**

---

# **AQUIND INTERCONNECTOR**

Additional Viewpoint Location Plan and Additional  
Viewpoints Part A Figures 15.57 - 15.59

**PINS REF.: EN020022**

**DOCUMENT: 7.7.16**

**DATE: 23 DECEMBER 2020**

WSP

WSP House

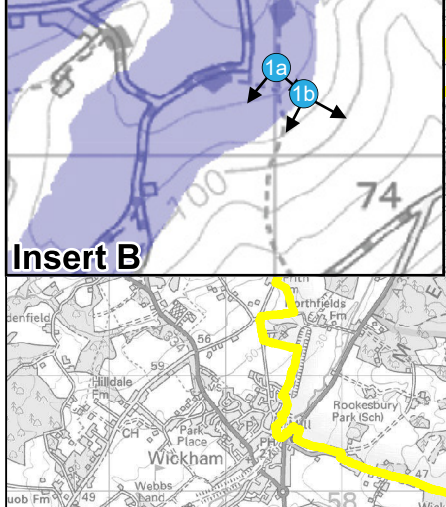
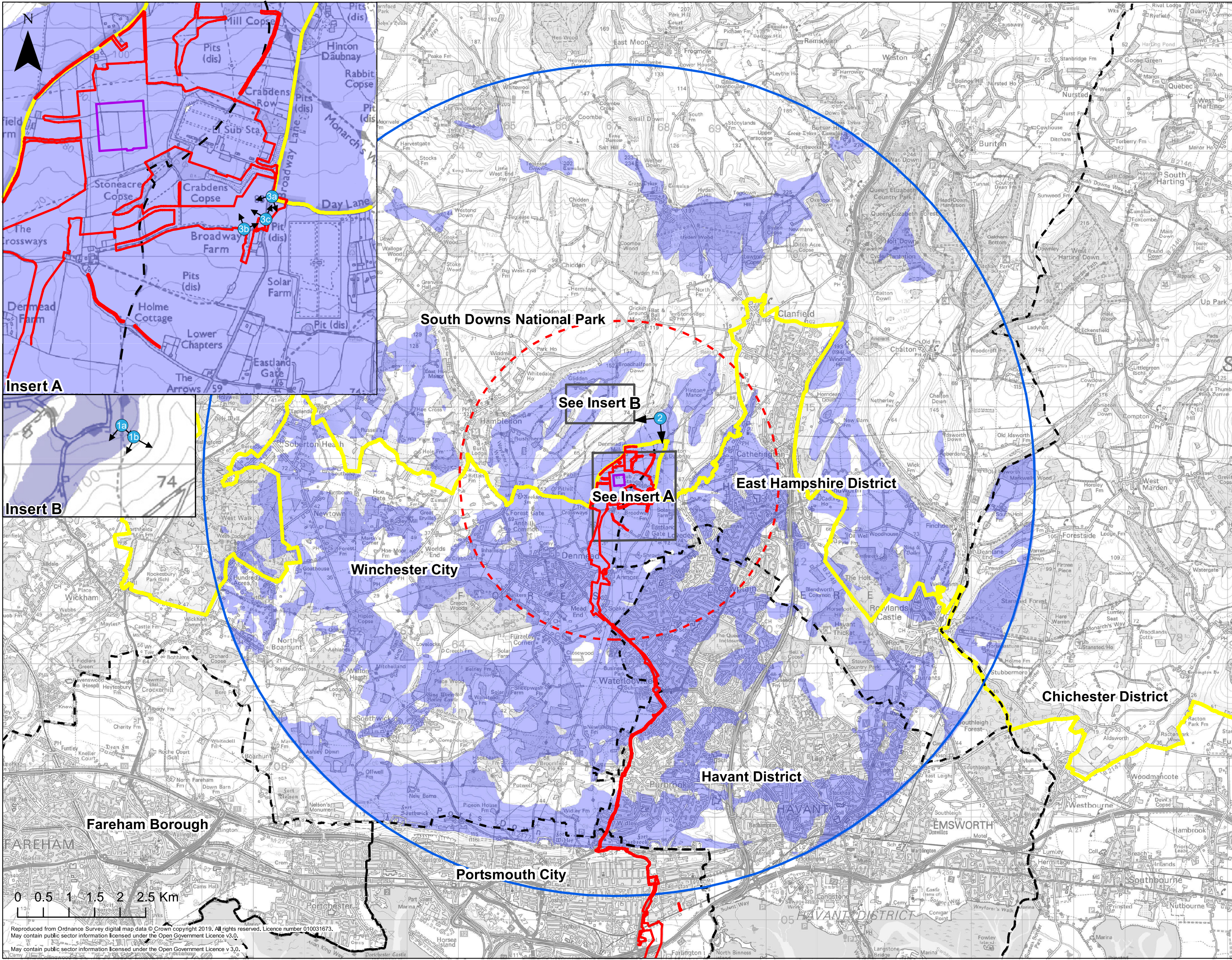
70 Chancery Lane

London

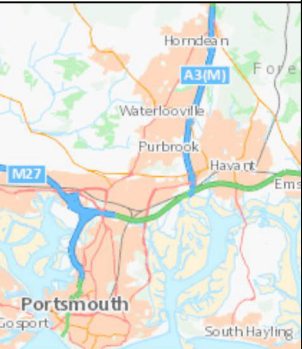
WC2A 1AF

+44 20 7314 5000

[www.wsp.com](http://www.wsp.com)



- Key**
- Order Limits
  - Approximate Converter Station Location
  - 8km Study Area
  - 3km Study Area
  - - - District Boundary
  - South Downs National Park
  - Additional Viewpoint Location
  - Zone of Theoretical Visibility



Infrastructure Planning (Applications: Prescribed Forms & Procedure) Regulations 2009 - Regulation 5(2)(a)

REV	DATE	BY	DESCRIPTION	CHK	APP
01	08/12/2020	JL	FIRST ISSUE	DW	MB

DRAWING STATUS: FINAL

**wsp**  
WSP House, 70 Chancery Lane, London, WC2A 1AF, UK.  
T+ 44 (0) 20 7314 5000  
wsp.com

**AQUIND**

PROJECT: AQUIND Interconnector

Figure 15.57  
Additional Viewpoint Location Plan

SCALE AT 1:65,000	CHECKED: DW	APPROVED: MB
PROJECT NO: EN020022	DESIGNED: JL	DRAWN: JL
DRAWING NO: Figure 15.57	DATE: 08/12/2020	REVNO: 01

Reproduced from Ordnance Survey digital map data © Crown copyright 2019. All rights reserved. Licence number 010031673.  
May contain public sector information licensed under the Open Government Licence v3.0.

\\uk.wspgroup.com\central\_data\Projects\02\00xv\02\00616 - Aquind VO No.3\A\DCOD\_EIA5\_WP14\_Landscape and Visual (LVA)\Visualisations\Design\A1\_00degree\_HFDV\_sheets\_VP1\_VP17



© WSP UK Ltd  
Viewpoint location: (E) 466999 (N) 115232  
See Figure 15.57 for Viewpoint Location Plan  
Horizontal field of view: 90° (cylindrical projection)

Date and time of photography: 19th November 2020, 14:47 pm  
Camera & lens: Canon 6D, 50mm f1.4 prime lens  
Distance from camera to Option B(ii): 1.61km, bearing 174°

Infrastructure Planning (Applications: Prescribed Forms and Procedure)  
Regulations 2009 - Regulation 5 (2)(a)  
This figure is to be printed at A1 width x A4 height: 841 x 297 mm



Drawn: RT Checked: MB Approved: AF  
Date 16/12/2020  
Additional Viewpoint 1a: Baseline Winter  
AQUIND Interconnector Dwg No: EN 020022-ES-15.58A  
Figure 15.58A

\\uk.wspgroup.com\central\_data\Projects\62100xxx\62100616 - Aquind VO No.3\A DCOID - EIA\5. WIP\4. Landscape and Visual (LVA)\Visualisations\InDesign\A3\_40degree\_HFOV\_sheets\_r2 - Summer\_VP18 - VP22



Viewpoint location: (E) 466999 (N) 115232  
Date and time of photography: 19th November 2020, 14:47 pm  
Camera & lens: Canon 6D, 50mm f1.4 prime lens  
Horizontal field of view: 40°  
Print at A3 or view full frame on a 24" monitor

Distance from camera to Option B(ii): 1.61km, bearing 174°  
For Viewpoint Location Plan See Figure 15.57

Infrastructure Planning (Applications:  
Prescribed Forms and Procedure)  
Regulations 2009 - Regulation 5 (2)(a)

Drawn: RT Checked MB Approved: AF  
Date 16/12/2020  
Dwg No: EN 020022-ES-15.58B



**AQUIND Interconnector  
Additional Viewpoint 1a:  
Baseline Winter  
Figure 15.58B**

\\uk.wspgroup.com\central\data\Projects\62100xxx\62100616 - Aquind VO No.3\A.DCOID. EIA\5. WIP\4. Landscape and Visual (LVIA)\Visualisations\InDesign\A3\_27degree\_HFOV\_sheets\_VPA & VPB Photomontages



Viewpoint location: (E) 466999 (N) 115232  
Date and time of photography: 19th November 2020, 14:47 pm  
Camera & lens: Canon 6D, 50mm f1.4 prime lens  
Horizontal field of view: 27°  
Print at A3 or view full frame on a 24" monitor

Distance from camera to Option B(ii): 1.61km, bearing 174°  
For Viewpoint Location Plan See Figure 15.57

Infrastructure Planning (Applications:  
Prescribed Forms and Procedure)  
Regulations 2009 - Regulation 5 (2)(a)

Drawn: RT Checked MB Approved: AF  
Date 16/12/2020  
Dwg No: EN 020022-ES-15.58C

 **AQUIND** 

**AQUIND Interconnector  
Additional Viewpoint 1a:  
Baseline Winter  
Figure 15.58C**

\\uk.wspgroup.com\central\_data\Projects\6210\env\62100616 - Aquind VO No.3\A\DCOD\_EIA\5 - WIP\4 - Landscape and Visual (LVA)\Visualisations\Design\A1\_50degrees\_HFDV\_sheets\_VP1 - VP17



Baseline Panorama

This image provides landscape and visual context only

© WSP UK Ltd  
Viewpoint location: (E) 467024 (N) 115244  
See Figure 15.57 for Viewpoint Location Plan  
Horizontal field of view: 90° (cylindrical projection)

Date and time of photography: 19th November 2020, 15:00 pm  
Camera & lens: Canon 6D, 50mm f1.4 prime lens  
Distance from camera to Option B(ii): 1.62km, bearing 175°

Infrastructure Planning (Applications: Prescribed Forms and Procedure)  
Regulations 2009 - Regulation 5 (2)(a)  
This figure is to be printed at A1 width x A4 height: 841 x 297 mm



Drawn: RT Checked: MB Approved: AF  
Date 16/12/2020  
Additional Viewpoint 1b: Baseline Winter  
AQUIND Interconnector Dwg No: EN 020022-ES-15.59A  
Figure 15.59A

\\uk.wspgroup.com\central\data\Projects\62100xxx\62100616 - Aquind VO No.3\A.DC.OID. EIA\5. WIP\4. Landscape and Visual (LVA)\Visualisations\InDesign\A3\_40degree\_HFOV\_sheets\_r2 - Summer\_VP18 - VP22



Viewpoint location: (E) 467024 (N) 115244  
Date and time of photography: 19th November 2020, 15:00 pm  
Camera & lens: Canon 6D, 50mm f1.4 prime lens  
Horizontal field of view: 40°  
Print at A3 or view full frame on a 24" monitor

Distance from camera to Option B(ii): 1.62km, bearing 175°  
For Viewpoint Location Plan See Figure 15.57

Infrastructure Planning (Applications:  
Prescribed Forms and Procedure)  
Regulations 2009 - Regulation 5 (2)(a)

Drawn: RT Checked MB Approved: AF  
Date 16/12/2020  
Dwg No: EN 020022-ES-15.59B



**AQUIND Interconnector**  
**Additional Viewpoint 1b:**  
**Baseline Winter**  
**Figure 15.59B**



\\uk.wspgroup.com\central\data\Projects\62100xxx\62100616 - Aquind VO No.3\A.DCOID. EIA\5. WIP\4. Landscape and Visual (LVA)\Visualisations\InDesign\A3\_27degree\_HFOV\_sheets\_VPA & VPB Photomontages



Viewpoint location: (E) 467024 (N) 115244  
Date and time of photography: 19th November 2020, 15:00 pm  
Camera & lens: Canon 6D, 50mm f1.4 prime lens  
Horizontal field of view: 27°  
Print at A3 or view full frame on a 24" monitor

Distance from camera to Option B(ii): 1.62km, bearing 175°  
For Viewpoint Location Plan See Figure 15.57

Infrastructure Planning (Applications:  
Prescribed Forms and Procedure)  
Regulations 2009 - Regulation 5 (2)(a)

Drawn: RT Checked MB Approved: AF  
Date 16/12/2020  
Dwg No: EN 020022-ES-15.59C



**AQUIND Interconnector  
Additional Viewpoint 1b:  
Baseline Winter  
Figure 15.59C**